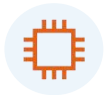


FD602XW-X-R412

1GE+1FE+1POTS+WIFI XPON ONU



High Speed CPU



Low Power Consumption



Software Customization



Optional Shell Supply



Brief Views

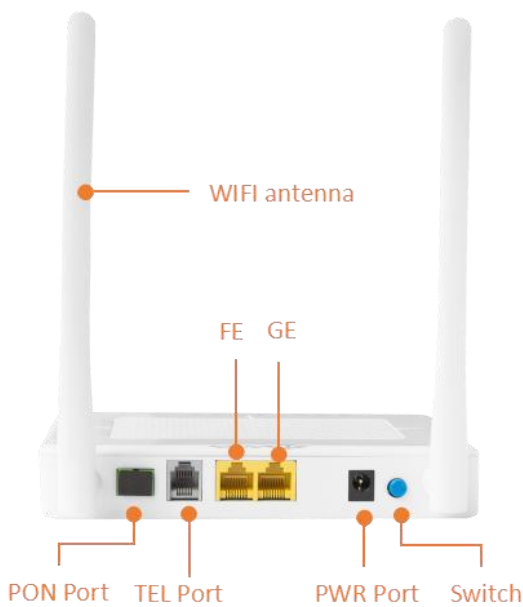
FD602XW-X-R412 dual-mode ONU supports EPON and GPON two modes access. The ONU automatically switches into the corresponding PON mode by identifying the local OLT mode to complete GPON or EPON adaptive access.

FD602XW-X-R412 features high-performance forwarding capabilities to ensure excellent experience with VoIP and Internet services. It fully meets the ITU-T technical standards and have good compatibility with third party OLT. It provides a perfect terminal solution and future-oriented service supporting capabilities for FTTH deployment.

Functional Feature

- In compliant with ITU-T G.984 and IEEE802.3ah standard
- Support ONU auto-discovery/Link detection/remote upgrade of software
- Support multicast Snooping/Proxy
- Support DHCP/Static/PPPOE internet mode
- Support port-binding
- Support OAM/OMCI remote management
- Support data encryption and decryption function
- Meet 802.11 b/g/n WIFI technical standard
- Support loop-detection function
- Support device-based speed limitation
- Support MAC filter and URL access control
- Support SIP protocol
- Support power-off alarm function ,easy for link problem detection
- EMS network management based on SNMP ,convenient for maintenance

Product Interface and LED



- ① PWR
- ② PON
- ③ LOS
- ④ INT
- ⑤ GE
- ⑥ FE
- ⑦ TEL
- ⑧ WIFI
- ⑨ OPT

LED Definitions

| Indicator | | Description |
|-----------|---------------------------|-----------------------------------------------------------------------------------------------------------------------------------------------------------------------------------------------------------------------------|
| PWR | Power status | On: The ONT is power on; Off: The ONT is Power off; |
| PON | ONT Register | On: Success to register to OLT; Blinking: In process of registering to OLT; Off:Failed to register to OLT or no normal optical signal input; |
| LOS | PON optical signals | On: Optical power lower than receiver sensitivity ; Off: Optical in normal |
| INT | Internet status indicator | On: The routed WAN Internet access service is normal. Off: The routed WAN Internet access service is abnormal. |
| GE | GE port status | On: Ethernet connection is normal; Blinking: Data is being transmitted through the Ethernet port; Off: Ethernet connection is not set up; |
| FE | FE port status | On: Ethernet connection is normal; Blinking: Data is being transmitted through the Ethernet port; Off: Ethernet connection is not set up; |
| TEL | Telephone port status | On: The connection between the TEL port and the voice server has been set up Blinking: The voice service of the TEL port is established; Off: The connection between the TEL port and the voice server is not set up. |
| WIFI | WIFI | Blinking: Data is being transmitted On: WIFI function Opens |
| OPT | Light intensity indicator | On: Higher than ONU RX maximum threshold; Flashing: Lower than ONU RX minimum threshold; Off: ONU RX is within the normal threshold range. |

Hardware

● GPON/EPON Port

- Single mode single fiber
- GPON: FSAN G.984.2 standard,Class B+
- EPON: 1000BASE-PX20+ symmetric
- GPON: 2.488Gbps/1.244Gbps downstream/upstream
- EPON: 1.25Gbps downstream/upstream
- Wavelength :
Transmit: 1310nm Receiver: 1490nm
- Receiving sensitivity :
GPON: -28dBm EPON: -27dBm
- Saturated power :
GPON: -8dBm EPON: -3dBm
- Transmitting power :
GPON: 0.5~5dBm EPON:0~4dBm

● User Port(LAN)

- RJ-45 connector
- 1*10/100 and1 *10/100/1000Mbps adaptive Ethernet port
- Full/half duplex
- Auto MDI/MDI-X

● User Port(POTS)

- RJ-11 connector
- 1*POTS
- SIP protocol
- TDMF
- G711U/G711A/G729/G722 encoding and decoding

- **Indicators**
 - PWR / PON / LOS / GE / FE / TEL / WIFI / INT / OPT
- **Dimension and Weight**
 - Item Dimension:
 - 172mm(L) x 124mm(W) x 40.5mm (H)
 - Item weight: 204g
- **Environmental Specifications**
 - Operating temperature: 0 to 40° C
 - Storage temperature: -40 to 85° C
 - Operating humidity: 10% to 90%(Non-condensing)
- **WIFI performance parameters**
 - IEEE802.11b/g/n(2.4G)
 - Max rate: 300M(2.4G)
 - MAX TX power 2.4G:17dBm
- **Power**
 - External 12VDC/1A power supply adapter
 - Power consumption: <7W

Software

- **Management**
 - EPON :OAM / WEB / TR069 / Telnet
 - GPON:OMCI / WEB / TR069 / Telnet
- **L3**
 - IPv4/IPv6 Dual Stack
 - NAT
 - DHCP client/server
 - PPPOE client/ Pass through
 - Static and dynamic routing
- **Switch**
 - MAC address learning
 - MAC address learning account limit
 - Broadcast storm suppression
 - VLAN transparent/tag/translate/trunk
- **Multicast**
 - IGMP V2
 - IGMP VLAN
 - IGMP transparent/Snooping/Proxy
- **Security**
 - Firewall
 - MAC address/URL filter
 - Remote WEB/Telnet access control
- **Register**
 - Auto-discovery/Link detection/Remote upgrade software
 - Auto/MAC/SN/LOID+Password authentication
- **Wireless**
 - Choose channel automatically

Application

- Typical Solution: FTTH
- Typical Business: Internet,WIFI,VOIP

